



Coreline tempo medium

BVP125 LED80-4S/740 OFA52

Coreline tempo medium - LED module, system flux 8000 lm - 740 neutral white - Optiflux asymmetrical axis angle 52°

CoreLine tempo medium is a highly efficient range of floodlights designed for 1:1 retrofit replacement of conventional technology, while retaining the same electrical installation and poles. A limited range of options makes it easy to find the best lux-for-lux replacement. The easy-to-install CoreLine tempo medium offers lumen packages for many different application areas as well as a choice of high-performance asymmetrical and symmetrical optics. It includes a U-shaped universal mounting bracket and external quick 3-poles IP68 connector.

Product data

General Information		Flammability mark	For mounting on normally flammable surfaces
Lamp family code	LED80-4S [LED module, system flux 8000 lm]	CE mark	CE mark
Light source color	740 neutral white	ENEC mark	ENEC mark
Light source replaceable	No	Warranty period	5 years
Number of gear units	1 unit	Optic type outdoor	Optiflux asymmetrical axis angle 52°
Driver/power unit/transformer	Power supply unit	Remarks	*-Per Lighting Europe guidance paper "Evaluating performance of LED based luminaires - January 2018": statistically there is no relevant difference in lumen maintenance between B50 and for example B10. Therefore, the median useful life (B50) value also represents the B10 value. * At extreme ambient temperatures the luminaire might automatically dim down to protect components
Driver included	Yes		
Optical element	-		
Optical cover/lens type	Flat glass		
Luminaire light beam spread	9° - 41° x 102°		
Connection	External connector		
Cable	Cable 1.0 m with plug Wieland/Adels compatible 3-pole		
Protection class IEC	Safety class I		

Coreline tempo medium

Constant light output	No
Number of products on MCB of 16 A type B	8
EU RoHS compliant	Yes
Light source engine type	LED
Serviceability class	Class C, luminaire without serviceable parts, not serviceable
Product family code	BVP125 [Coreline tempo medium]

Light Technical

Upward light output ratio	0
Standard tilt angle posttop	0°
Standard tilt angle side entry	0°

Operating and Electrical

Input Voltage	220 to 240 V
Input Frequency	50 to 60 Hz
Inrush current	53 A
Inrush time	0.3 ms
Power Factor (Min)	0.98

Controls and Dimming

Dimmable	No
----------	----

Mechanical and Housing

Housing Material	Aluminum
Reflector material	-
Optic material	Polycarbonate
Optical cover/lens material	Glass
Fixation material	Aluminum
Mounting device	Wall-mounting bracket
Optical cover/lens shape	Flat
Optical cover/lens finish	Clear
Overall length	340.5 mm
Overall width	265 mm
Overall height	67.4 mm
Effective projected area	0.09 m²
Color	Gray
Dimensions (Height x Width x Depth)	67 x 265 x 341 mm (2.7 x 10.4 x 13.4 in)

Approval and Application

Ingress protection code	IP66 [Dust penetration-protected, jet-proof]
Mech. impact protection code	IK08 [5 J vandal-protected]
Surge Protection (Common/Differential)	Luminaire surge protection level until 6 kV differential mode and 8 kV common mode

Initial Performance (IEC Compliant)

Initial luminous flux (system flux)	8000 lm
Luminous flux tolerance	+/-7%
Initial LED luminaire efficacy	124 lm/W
Init. Corr. Color Temperature	4000 K
Init. Color Rendering Index	70
Initial chromaticity	(0.382, 0.379) SDCM <5
Initial input power	66 W
Power consumption tolerance	+/-11%

Over Time Performance (IEC Compliant)

Control gear failure rate at median useful life 75000 h	7.5 %
Lumen maintenance at median useful life* 75000 h	L80

Application Conditions

Ambient temperature range	-40 to +50 °C
Performance ambient temperature Tq	25 °C

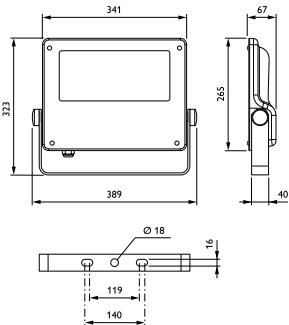
Product Data

Full product code	871869945588000
Order product name	BVP125 LED80-4S/740 OFA52
EAN/UPC - Product	8718699455880
Order code	912300024002
Numerator - Quantity Per Pack	1
Numerator - Packs per outer box	1
Material Nr. (12NC)	912300024002
Net Weight (Piece)	5.000 kg



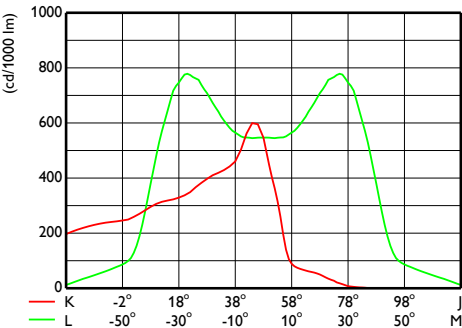
Coreline tempo medium

Dimensional drawing

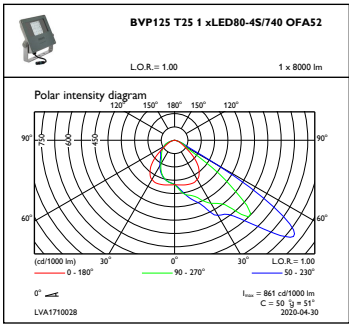


CoreLine Tempo BVP110/120/125/130/140

Photometric data



OFCS1_BVP125T251xLED80-4S7400FA52



OFPC1_BVP125T251xLED80-4S7400FA52

