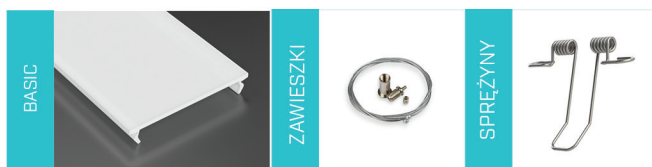


also catch

## End caps



## Covers [PVC/PMMA\PC]



# Profile LED Lumines INSO

Lumines INSO architectural groove-mounted Profile.  
Mounting: two-sided adhesive tape.

## PRODUCT PARAMETERS

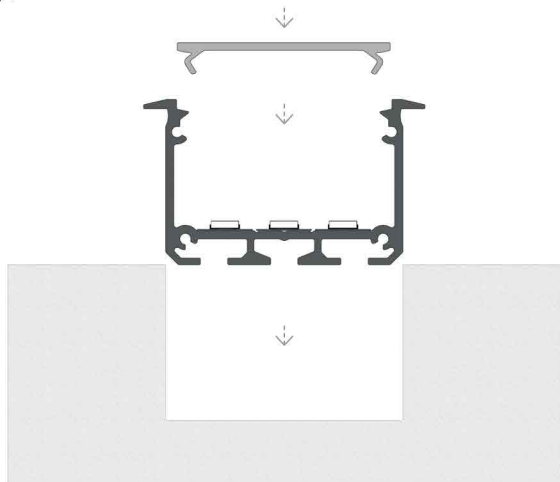
Dimensions (mm)	1000, 2020, 2900
The width of the LED tape	31,35 mm [LED module] 3 x LED strip 10 mm
Application	Groove-mounted profile - for decorative lighting in offices and homes

Accessories	<p>WIDE end caps [with hole, without hole]:</p> <ul style="list-style-type: none"> <li>* gray, white</li> </ul> <p>WIDE cover:</p> <ul style="list-style-type: none"> <li>* transparent, frozen, milky</li> </ul> <p>WIDE PMMA cover</p> <ul style="list-style-type: none"> <li>* frosted, milky frosted</li> </ul> <p>pendants</p> <p>mounting springs</p>
-------------	---

## Profile INSO - colours

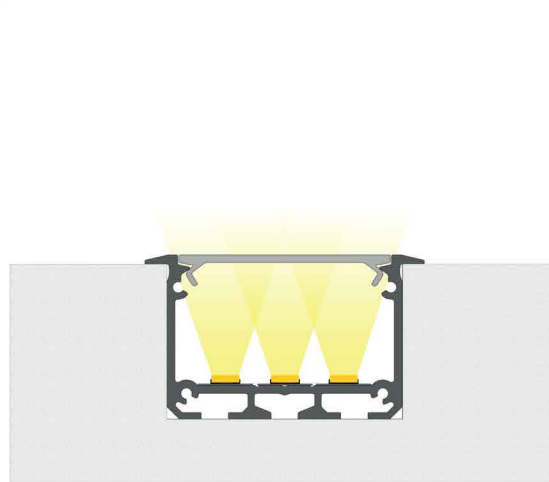


fig.1



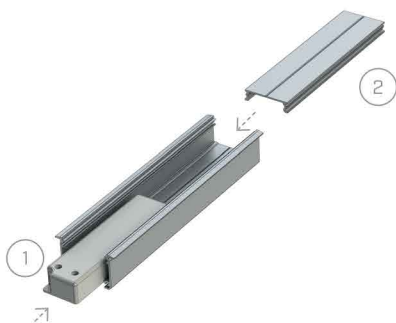
Installation instructions for groove mounted INSO profile with WIDE cover

fig.2



The end result of the installation of groove mounted INSO profile with WIDE cover

fig.3



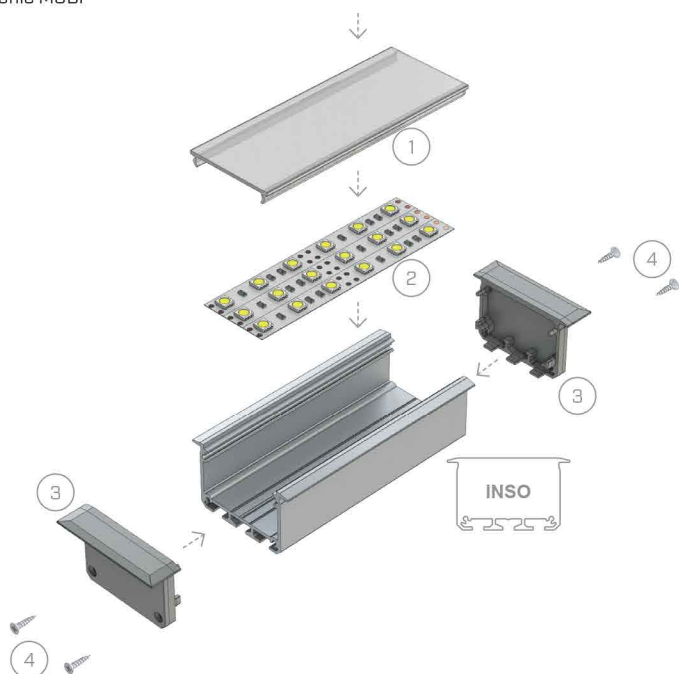
Assembly scheme for elements of the lighting system using groove mounted INSO profile and (1) a LED power strip, (2) mounting profile MODI

fig.4



Connecting INSO profiles inside milled opening at an angle of 90 degrees

fig.5



Assembly scheme for elements of the lighting system using groove mounted INSO profile and (1) WIDE cover, (2) three LED strips, (3) end caps (4) mounting screws for caps