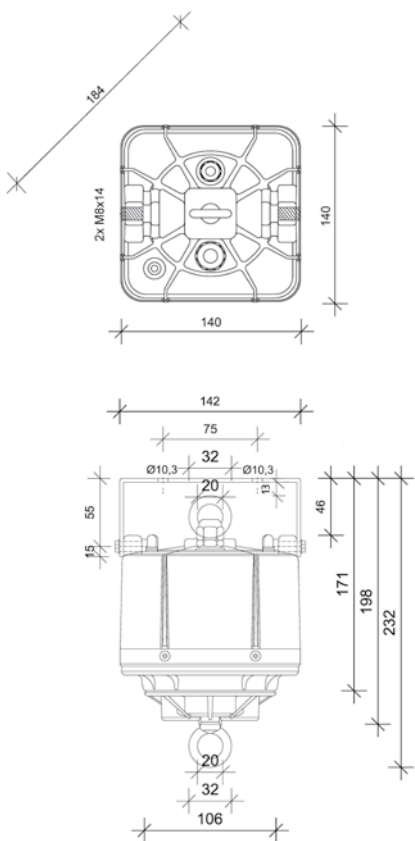


COMPACT TYPE STANDARD

Compact size and easy installation makes the Compact range the preferred solution for standard applications such as highbays, lowbays, downlights and fluorescents weighing up to 15 kg.



Dimensions (in mm) for:
CSI-12, CDI-15, CDI-15 M



Compact Type	CSI-12	CDI-15
Lifting capacity	3-12 kg	3-15 kg
Lowering distance	15m	10m
Suspension cable	single	double
Motor supply and lighting circuit	common	common
Power supply motor	100-277V AC /50-60Hz; 30W	
Lighting circuit	16A, 230V AC	16A, 230V AC
Auxiliary contacts / capacity	-	-
Protection category / class	IP 54 / I	IP 54 / I
Temperature range	-15 °C to + 60 °C	-15 °C to + 60 °C
Net weight / with packaging	3,2 / 3,4 kg	3,3 / 3,5 kg