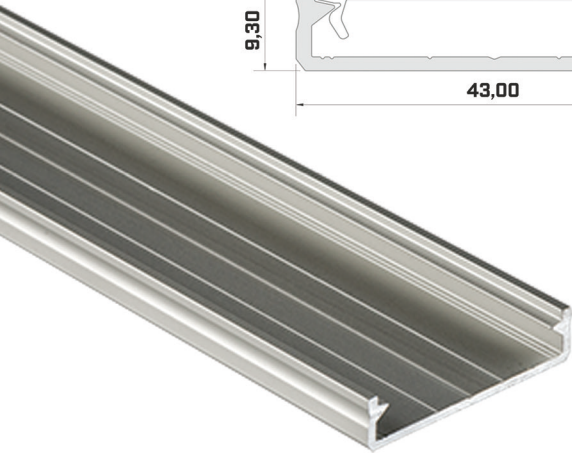
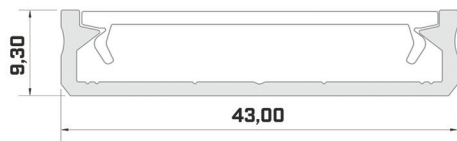




**SOLIS**

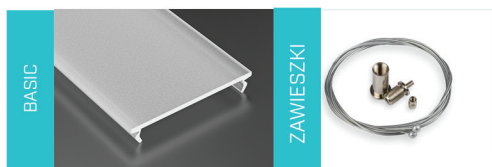


also catch

## End caps



## Covers [PVC/PMMA\PC], Pendants



## Profile LED Lumines SOLIS

Lumines SOLIS surface-mounted Profile.

Mounting: two-sided adhesive tape.

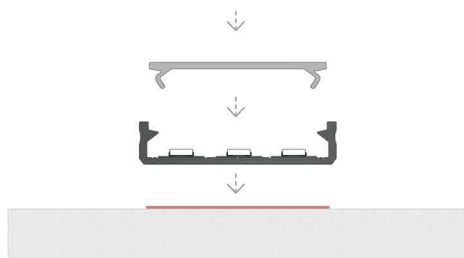
### PRODUCT PARAMETERS

Dimensions (mm)	1000, 2020, 2900
The width of the LED tape	3 x 10 mm
Application	Surface-mounted profile - for decorative lighting in offices and homes
Accessories	<p>WIDE end caps [with hole, without hole]:</p> <ul style="list-style-type: none"> <li>* gray, white</li> </ul> <p>WIDE cover:</p> <ul style="list-style-type: none"> <li>* transparent, frozen, milky</li> </ul> <p>WIDE PMMA cover:</p> <ul style="list-style-type: none"> <li>* frosted, milky frosted</li> </ul> <p>pendants</p>

## Profile SOLIS -colours

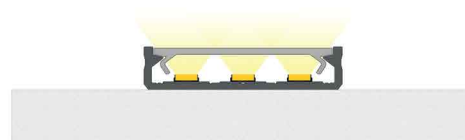


fig. 1



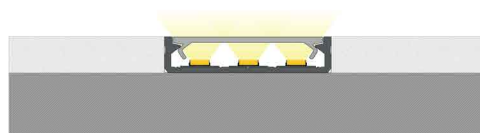
Installation instructions for SOLIS profile  
with WIDE cover using double-sided tape

fig. 2



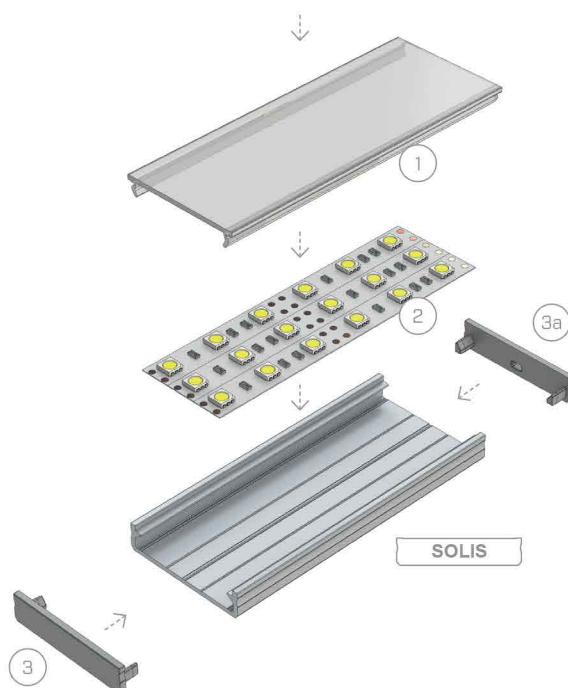
The end result of the installation of SOLIS profile  
with WIDE cover using double-sided tape

fig. 3



The end result of the installation of SOLIS profile  
with WIDE cover groove mounted between the boards

fig. 4



Assembly scheme for the elements of the lighting system using SOLIS profile and (1) a WIDE cover,  
(2) three LED strips, (3) end cap without hole (3a) end cap with hole