

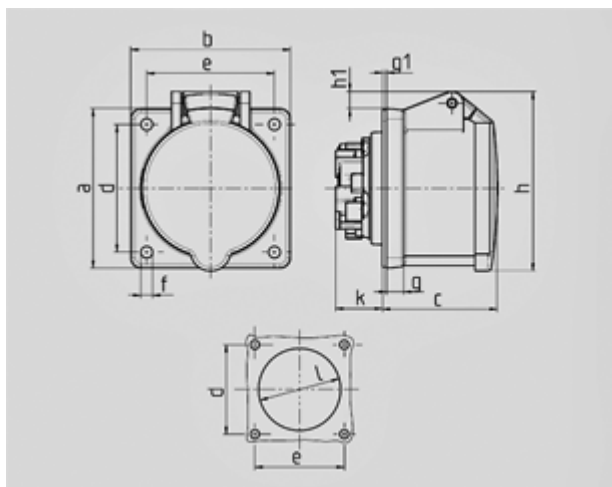
## Panel mounted receptacle with TwinCONTACT - Part no. 1673



- screwless spring terminals
- suitable for through wiring
- straight
- Blanking flange to close unused apertures for 16A panel mounted receptacles part no. 41419

|                       |                         |
|-----------------------|-------------------------|
| Protection type       | IP 44                   |
| Ampere                | 16A                     |
| Poles                 | 4p                      |
| Voltage               | 230V                    |
| Hertz                 | 50-60 Hz                |
| Earth position        | 9h                      |
| Contact               | standard                |
| Connection technology | Screwless - TwinCONTACT |
| Shutter               |                         |

Std. Pack. 10 Qty.



| Drawing    | Amp.                     | 16  |     |     | 32  |     |     |
|------------|--------------------------|-----|-----|-----|-----|-----|-----|
|            |                          | 3   | 4   | 5   | 3   | 4   | 5   |
| 1 MB 464   | Poles                    |     |     |     |     |     |     |
| Dim. in mm | a                        | 75  | 75  | 75  | 75  | 75  | 75  |
|            | b                        | 75  | 75  | 75  | 75  | 75  | 75  |
|            | c                        | 53  | 53  | 54  | 64  | 64  | 64  |
|            | d                        | 60  | 60  | 60  | 60  | 60  | 60  |
|            | e                        | 60  | 60  | 60  | 60  | 60  | 60  |
|            | f                        | 5,5 | 5,5 | 5,5 | 5,5 | 5,5 | 5,5 |
|            | g.                       | 8   | 8   | 8   | 8   | 8   | 8   |
|            | g.1                      | 2   | 2   | 2   | 2   | 2   | 2   |
|            | h                        | 75  | 80  | 85  | 89  | 89  | 95  |
|            | h1                       |     | 6   | 9   | 10  | 10  | 12  |
|            | k                        | 22  | 22  | 22  | 28  | 28  | 38  |
|            | l                        | 43  | 52  | 57  | 60  | 60  | 65  |
|            | Terminal for cond. cross | 1,5 | 1,5 | 1,5 | 2,5 | 2,5 | 2,5 |
|            | section (mm²) min.-max.  | —4  | —4  | —4  | —6  | —6  | —6  |