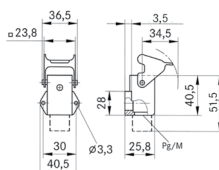




### EPIC® H-A 3 AGSV

Innovative metal and plastic housing design

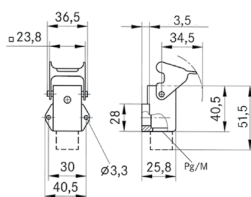
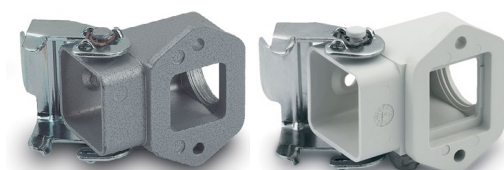


**Info**

- Lightweight chemically resistant plastic housing

### EPIC® H-A 3 AGSV open bottom

Innovative metal and plastic housing design



**Info**

- Lightweight chemically resistant plastic housing

#### Benefits

- Housing in plastic or metal version. For power supply in the smallest possible space

#### Application range

- Machine and equipment manufacturing
- Control engineering
- Electronic laboratory

#### Product features

##### EPIC® H-A 3 AGSV

- Surface-mount base
- 1 lever
- 1 cable entry
- Versions with / without cable gland

##### EPIC® H-A 3 AGSV open bottom

- Surface-mount base
- 1 lever
- 2 cable entries
- Housing type: with open base
- Included: flat gasket

#### Suitable inserts

- Refer to Selection Table A10 to select the required inserts and housings

#### Technical data

**ETIM** ETIM 5.0 Class-ID: EC000437  
ETIM 5.0 Class-Description: Housing for industrial connectors

**Material**  
Housing: powder-coated zinc die-casting, grey  
Lever: zinc-plated steel  
Sealing: NBR  
Housing: grey thermoplastic, black  
Lever: zinc-plated steel  
Sealing: NBR

**IP** **Protection rating**  
IP 65 (latched)

**DIN VDE** **VDE-tested**  
Certified production control:  
VDE-REG. no.: B437  
UL-tested:  
UL File Number: E75770

**Temperature range**  
-40 °C to +100 °C,  
short-term up to +125 °C

Article number	Article description	M	PG	Material	Colour	Cable gland	Cable clamping range	Dimensions incl. cable gland	Pieces / PU
<b>H-A housing: surface-mount base</b>									
10512700	H-A 3 MAgsv		11	Zinc die-casting	grey			51.5	10
10424000	H-A 3 Agsv		11	Thermoplastic	grey			56	10
10424500	H-A 3 MAgsv		11	Zinc die-casting	grey	yes	6.5 - 12.0	57.5	10
10424200	H-A 3 Agsv		11	Thermoplastic	grey	yes	6.5 - 12.0	65	10
19512700	H-A 3 MAgsv M20	20		Zinc die-casting	grey			54.5	10
19421900	H-A 3 Agsv M20	20		Thermoplastic	grey	yes	3.0 - 13.5	56	10
19424500	H-A 3 MAgsv M20	20		Zinc die-casting	grey	yes	3.0 - 13.5	60.5	10
<b>H-A housing: surface-mount base (with open base)</b>									
19517200	H-A 3 MAgsv M20	20		Zinc die-casting	grey				10
19515200	H-A 3 Agsv M20	20		Thermoplastic	grey				10

Photographs are not to scale and do not represent detailed images of the respective products.

#### Accessories

##### EPIC® H-A 3 AGSV

- SKINTOP® MS refer to page 792
- SKINTOP® MS-M refer to page 724
- SKINTOP® ST refer to page 788
- SKINTOP® ST-M refer to page 712
- EPIC® Protective cover H-A refer to page 660

##### EPIC® H-A 3 AGSV Boden offen

- SKINTOP® MS refer to page 792
- SKINTOP® MS-M refer to page 724
- SKINTOP® ST refer to page 788
- SKINTOP® ST-M refer to page 712
- EPIC® Protective cover H-A refer to page 660