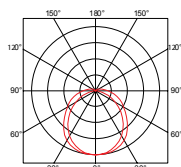


# OLBIA

Surface / Suspended  
IP66



LED				IP66	IK10			5 years warranty	50,000 hrs L80/B20 Ta=25°C	220-240V 50-60Hz		CE
-----	--	--	--	------	------	--	--	------------------	----------------------------------	---------------------	--	----

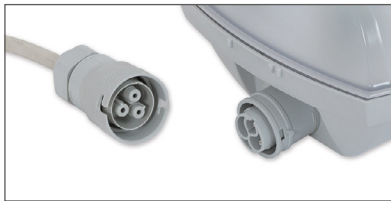
## OLBIA

OLBIA  
Surface / Suspended

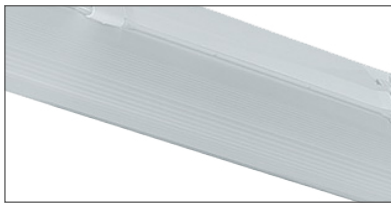
LIGHT OUTPUT	up to 7090 lm
EFFICIENCY	up to 133 lm/W
WIRING	ECG, on request: DALI, 1-10V On request: Emergency kit (1h, 3h)
CCT	4000K On request: 3000 K, 5000 K, 6500 K
CRI	≥ 80 Ra
MATERIALS	
> Housing	Grey polycarbonate (PC), UV stable
> Diffuser	Translucent polycarbonate (PC)
> Reflector	Steel sheet, white color (RAL 9003)
> Clips	Polyamide + 15 % glass fibre or Stainless steel + polyamide
LIGHT DISTRIBUTION	Direct
ADVANTAGES	Impact-resistant (IK10), <b>Housing sealed</b> with polyurethane gasket to improve IP66 protection
SURFACE FINISH	Grey polycarbonate (PC)
ACCESSORIES	Stainless steel clips, Connector on clients request, Protection grid, Side hanger with blocking



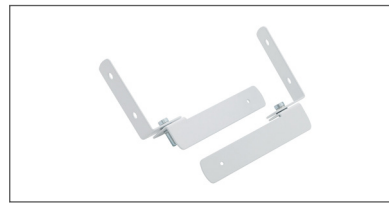
Connector on clients request  
Wieland connector



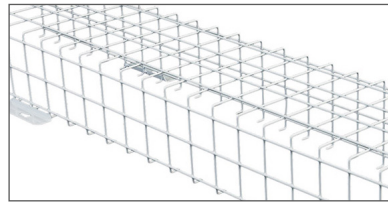
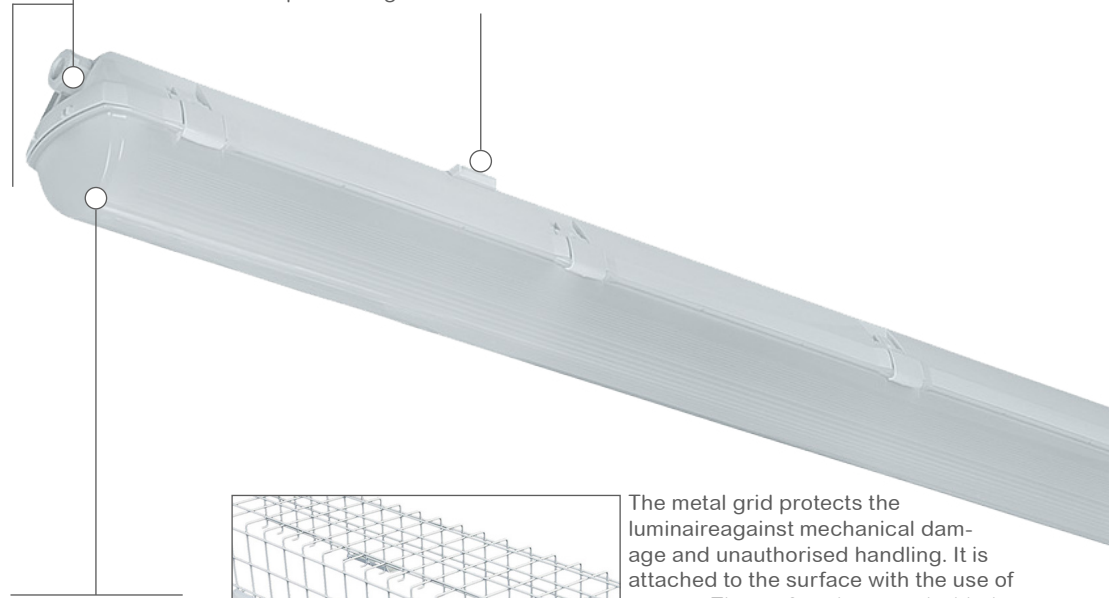
Connector on clients request  
Stucchi connector



Translucent polycarbonate (PC),  
UV stable, impact-resistant (IK10)  
Fire & ignition resistance (850 C\*)

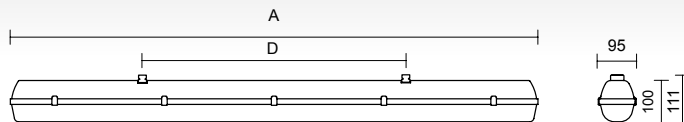


Side hanger with blocking  
It serves to attach the light fitting  
to the wall with the possibility of its  
positioning.



The metal grid protects the  
luminaire against mechanical dam-  
age and unauthorised handling. It is  
attached to the surface with the use of  
screws. The surface is treated with the  
RAL 9003 powder-coated color.

drawing #1



Net lumen output	CCT	Power	Dimensions	Weight	Purchase code
(lm)	(K)	(W)	(mm)	(kg)	
1260	4000	10	A: 662 D:350	1.30	OLBIA.60.10.1260.4K.66
1510	4000	12	A: 662 D:350	1.20	OLBIA.60.12.1510.4K.66
1950	4000	15	A: 662 D:350	1.30	OLBIA.60.15.1950.4K.66
2320	4000	18	A: 1272 D:700	1.90	OLBIA.120.18.2320.4K.66
2860	4000	22	A: 1272 D:700	1.70	OLBIA.120.22.2860.4K.66
3920	4000	30	A: 1272 D:700	1.90	OLBIA.120.30.3920.4K.66
5650	4000	43	A: 1272 D:700	1.90	OLBIA.120.43.5650.4K.66
2810	4000	22	A: 1572 D:940	2.30	OLBIA.150.22.2810.4K.66
3530	4000	27	A: 1572 D:940	2.20	OLBIA.150.27.3530.4K.66
4940	4000	37	A: 1572 D:940	2.30	OLBIA.150.37.4940.4K.66
7090	4000	54	A: 1572 D:940	2.30	OLBIA.150.54.7090.4K.66