

MODEL **BAA0100ST**
A 100ST

PRODUCT DESCRIPTION

Axial fan, domestic range, NOVOVENT brand, A series A 100ST Single phase motor 220-240V-AC. 50 Hz. IP 24. The units are all manufactured using high gloss ABS thermoplastics for strength, durability, aesthetics and easy cleaning. Include lapet antiretour.



Installation type **WALL MOUNTED**

Specifications

STANDARD APPLICATION

PRODUCT TECHNICAL DETAILS

Max Airflow	89,99 m ³ /h	Installed power	0,01 kW
Max St Pressure	206,31 Pa	Nominal current	0,12 A
Diameter	100 mm	Nominal rpm	1.894,00 rpm
Ballancing	Q6.3 DYNAMICALLY		
Impeller material	ABS		
Casing material	ABS		

PRODUCT DUTY POINT

Temperature	8 °C
Height over sea level	0 m
Air density	1,263866 kg/m ³
Airflow	89,99 m ³ /h
Static Pressure	17,98 Pa
Dynamic Pressure	6,40 Pa
Total Pressure	24,38 Pa
Shaft Power	12,59 W
MAX Thrust	0,00 N
Sound Power Level	72,5 db(A)
Sound Pressure Level at 3m	55,0 db(A)

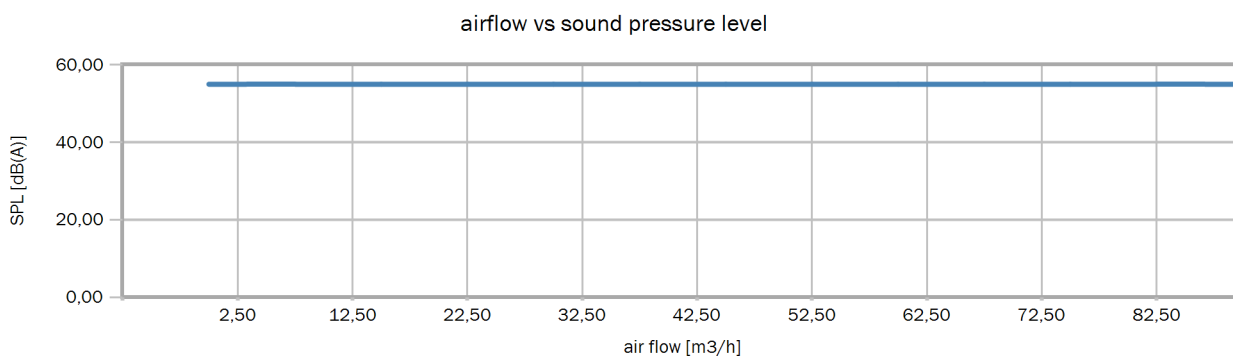
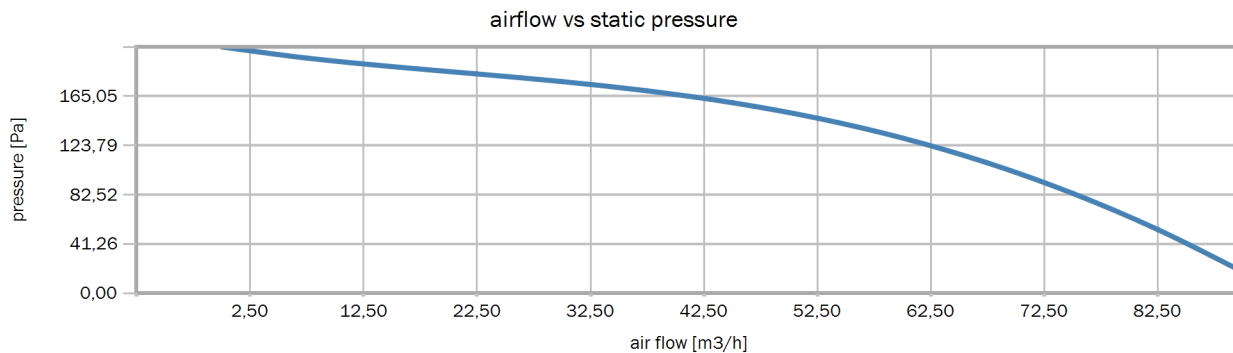
TECHNICAL REQUIRED SPECIFICATIONS

Temperature	8 °C
Height over sea level	0 m
Air density	1,263866 kg/m ³
Airflow	0,00 m ³ /h
Pressure	0,00 Pa
Shaft Power	octave band (Hz)
	63 125 250 500 1000 2000 4000 8000
Sound Power Level	39,3 49,4 56,9 62,3 65,5 66,7 66,5 64,4
Sound Pressure Level at 3m	21,8 31,9 39,4 44,8 48,0 49,2 49,0 46,9

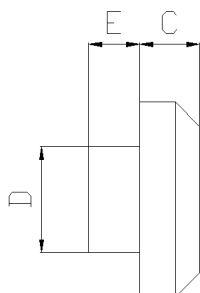
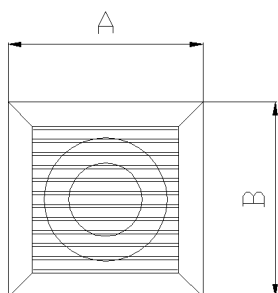
PRODUCT CHART

Air density 1.2046 kg/m³

NOVOVENT reserves the right of change any design (including drawings, materials and specifications) and is the sole owner of the software development, not accepting mistakes that could happen because of a faulty installation or based on a non updated version of software. Information given on this data sheet is for this specific fan being highly recommended to refer and follow the project requirements and instructions. This data sheet has been printed on 18/09/2017 using software version 2017. Sound data are given under laboratory conditions and may differ from operation and mounting conditions. Use this sound data as a reference only. Drawings are for dimensional purposes only. Start currents are DOL for motors power below 4kW and above are Star Delta.



PRODUCT DIMENSIONS



A	B	C	D	E
155	155	25	98	70
F	G	H	I	J
0	0	0	0	0
K	L	M	N	
0	0	0	0	

NOVOVENT reserves the right of change any design (including drawings, materials and specifications) and is the sole owner of the software development, not accepting mistakes that could happen because of a faulty installation or based on a non updated version of software. Information given on this data sheet is for this specific fan being highly recommended to refer and follow the project requirements and instructions. This data sheet has been printed on 18/09/2017 using software version 2017. Sound data are given under laboratory conditions and may differ from operation and mounting conditions. Use this sound data as a reference only. Drawings are for dimensional purposes only. Start currents are DOL for motors power below 4kW and above are Star Delta.