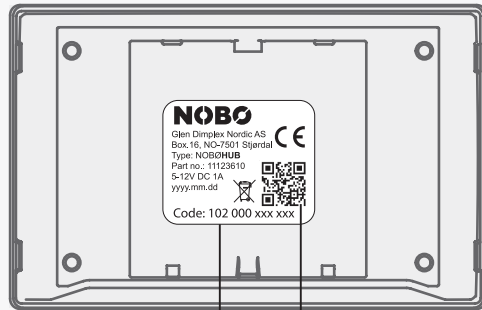




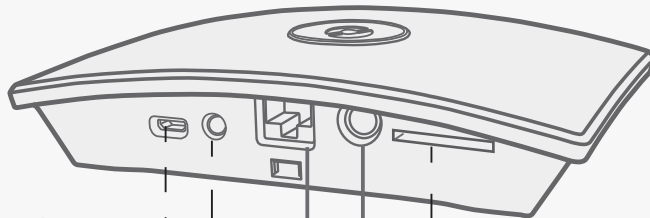
<http://help.nobo.no>

ID



ID code / ИД код

ID QR-code / ИД QR-код



(MicroUSB)

(RS232)

Ethernet

5-12V DC

(SD mini)



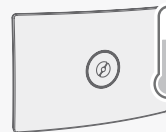
RF 868,4 MHz  
≤10 mW



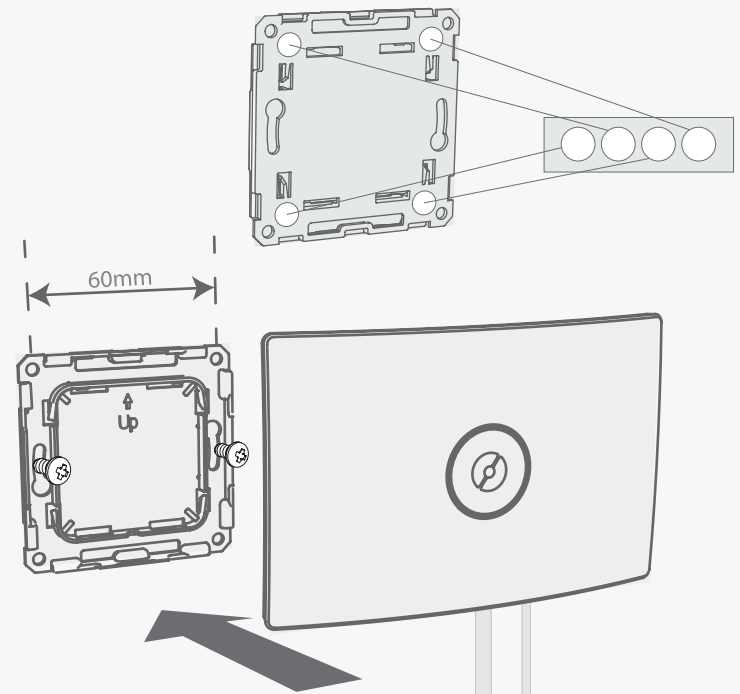
1A



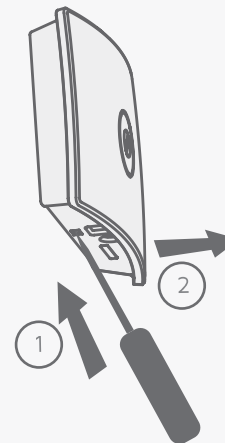
IP20



max +35°C

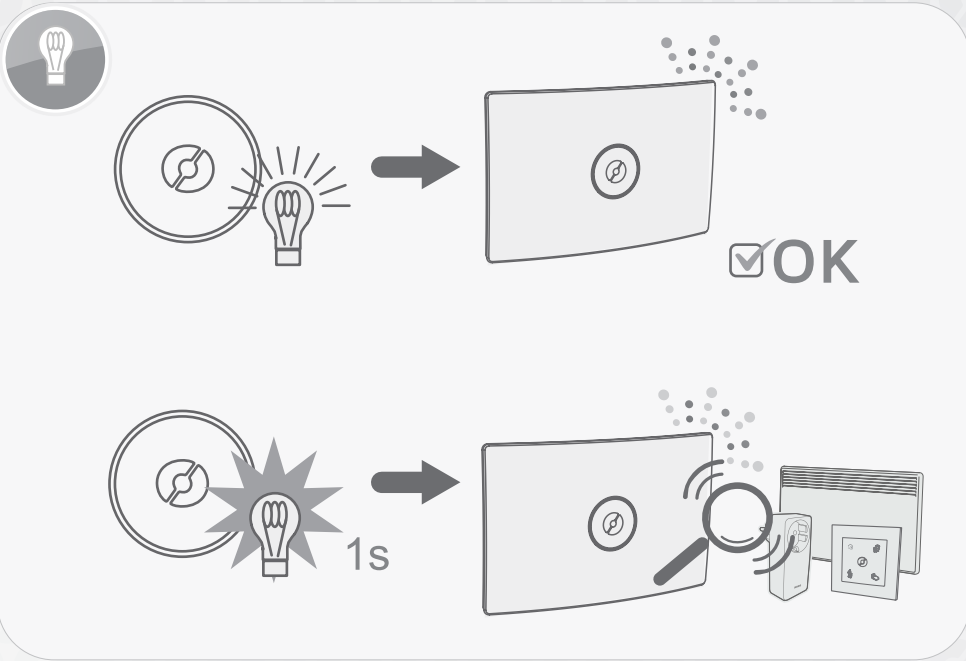


Enheten må kun kobles til ekstern strømkilde ved hjelp av den vedlagte strømkabelen.  
The unit must only be connected to the external power supply supplied with the equipment.  
Устройство должно быть подключено только к внешнему источнику питания, поставляемого с оборудованием.



Europe plug	AC / DC adaptor, 100-240Vac / 9Vdc,	YS6-0900600E
UK plug	0.6A. DC cable 1.5m	YS6-0900600B
Australia plug	w/ 5.5x2.5x12mm plug	YS5-0900600

NINGHAI YINGJIAO ELECTRICAL CO., LTD.  
Xidian Town, Ninghai, Zhejiang 315613, China



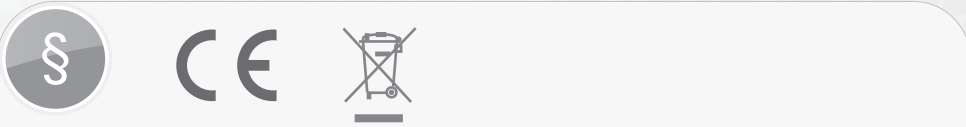
# NOBØ

## HUB

Trådløs energikontroll  
Wireless  
energy controller  
Беспроводной контроллер  
энергопотребления



Brukerveiledning  
User guide  
Инструкция



**SAMSVARERKLÆRING (DoC).**  
Glen Dimplex Nordic AS erklærer herved at utstyret som er beskrevet i denne anvisningen (NOBØHUB) oppfyller alle vesentlige krav og andre relevante bestemmelser i EU- direktiv 2014/53/EU. Ved behov for kopi av DoC kan forespørsel sendes til: email@glendimplex.no

**DECLARATION OF CONFORMITY (DoC).**  
Glen Dimplex Nordic AS declares that the equipment described in this user guide (NOBØHUB), is in compliance with the essential requirements and other relevant provisions of EU Directive 2014/53/EU. If you require a copy of the original signed DoC, please send an E-mail to: email@glendimplex.no

**GlenDimplex**  
NORDIC  
Havnegata 24, BOX 16, N-7500 Stjørdal, NORWAY  
www.glendimplex.no  
email@glendimplex.no

