

PUSH WIRE® connector for junction boxes; 3-conductor terminal block; transparent housing; red cover



Item No.: 773-173

PUSH WIRE® connector for junction boxes; 3-conductor terminal block; transparent housing; red cover

Marking

RoHS ✓
Compliant

Business data

Supplier	WAGO
Supplier part no.	773-173
EAN	4050821215141
Content	1
Order amount	50
SAP material no.	

Notes:

Technical data

Miscellaneous

No. of Poles	3
Total number of connection points	3
Total number of potentials	1
Color	transparent
Pollution degree (1)	2
Rated voltage EN (1) [V]	400 [V]
Rated surge voltage (1) [kV]	4 [kV]
Nominal current [A]	41 [A]
Connection technology (1)	PUSH WIRE [®]
Conductor type (1)	solid + stranded
Cross section from (1) [mm ²]	2.5 [mm ²]
Cross section up to (1) [mm ²]	6 [mm ²]

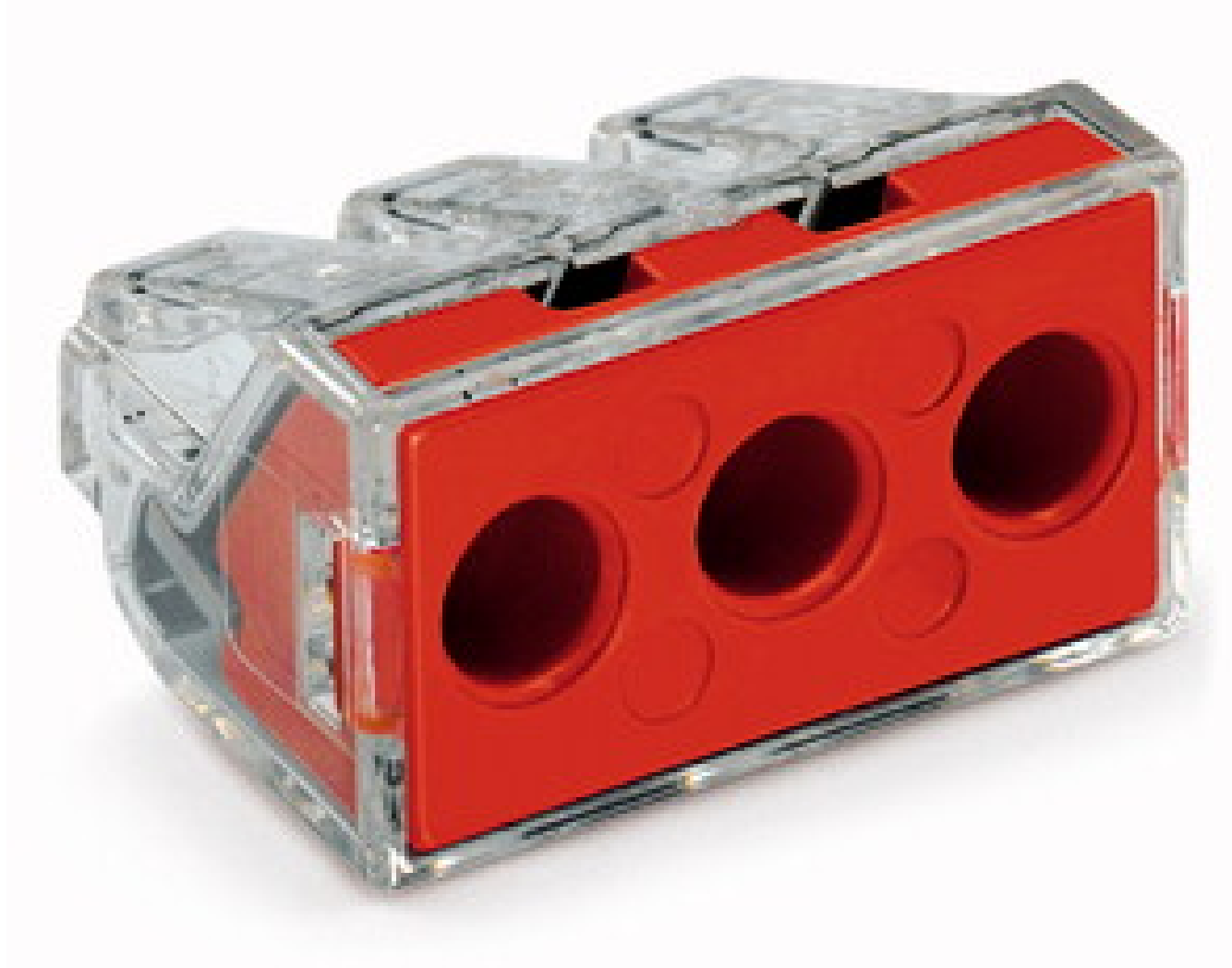
Technical data	
Cross section from (1) [AWG]	14 [AWG]
Cross section up to (1) [AWG]	10 [AWG]
Stripped length from (1) [mm]	12 [mm]
Stripped length up to (1) [mm]	13 [mm]
Stripped length (1) [in]	0.49 [in]
Type of wiring	Side-entry wiring
Fire load [MJ]	0.115 [MJ]
Weight [g]	5.812 [g]
Width [mm]	25.6 [mm]
Width [in]	1.008 [in]
Height [mm]	14.2 [mm]
Height [in]	0.559 [in]
Length [mm]	20.1 [mm]
Length [in]	0.791 [in]
Safety information 1	In grounded power lines

Approbation					
Item no.	Registration office	Registration no.	Voltage [V]	Current [A]	Cross section [mm ² , AWG]
773-173	CSA	154112-1059435	600	30	14-10"s", 16-22str, 16-22*
773-173	ENEC15	DK137981-01	400	41	2,5-4
773-173	ENEC15	DK140612-01	400	41	2,5-6
773-173	UL listed	E69654	600	20	14-10sol/str
773-173	PSE	JET0695-43040-1001	600	30	14-10sol/str
773-173	RosTest	AB24 B04007			

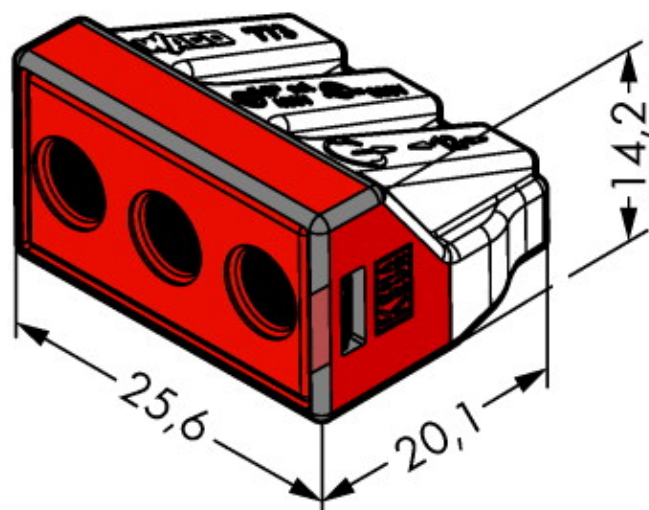
General accessory		
Item Number	Designation	Pack. Unit
773-332	Mounting carrier; for all 773 Series PUSH WIRE® connectors for junction boxes	10

Diagrams
Detail images

Diagrams



Diagrams



Address

WAGO Kontakttechnik GmbH & Co. KG
Hansastr. 27
32423 Minden
Phone: 0571/887-0
Fax: 0571/887-169
<http://www.wago.com>



© 2011 WAGO INNOVATIVE CONNECTIONS
Technical changes reserved